

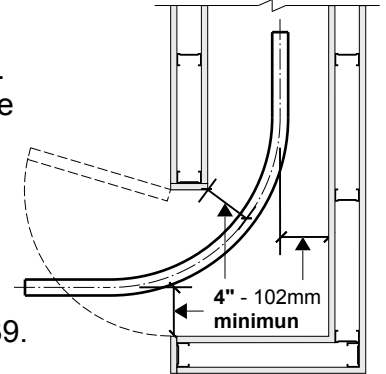


FOLDING CLOSURES Installation instructions

1. Site verification:

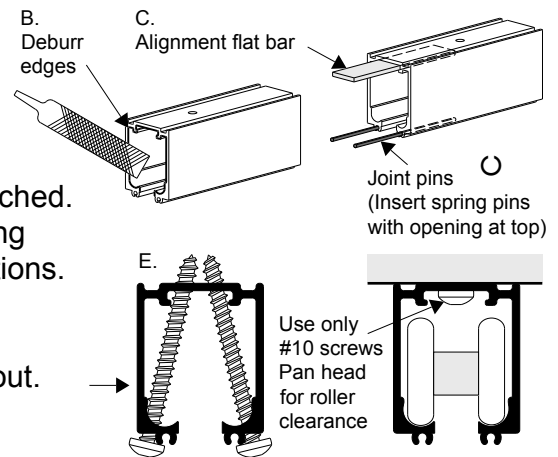
- Check that opening **height**, **width** and configuration correspond to the dimensions of the drawing.
- Inspect the bulkhead to verify that the wood blocking is sufficient to support the closure weight especially in the stacking area.
A minimum thickness of 1-1/2" (38mm) of continuous wood support is required.
- Make sure that you have a clearance of 4" (102mm) on each side of center line of track everywhere. Verify if the pocket depth and the entrance width are sufficient to stack the closure. Stacking required is approximately 2" per linear foot (170mm per linear meter) of curtain.

Do not begin the installation until you are satisfied that all requirements are met. If not, contact MobilFlex head office at 1.418.831.6652 or 1.800.501.3539.



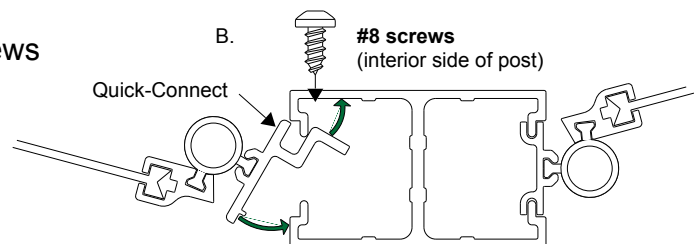
2. Track installation:

- Look for the envelope for all the necessary hardware.
Install the curves first (if applicable) or straight track at pocket.
- For each cut, make sure that joints are squared, tight, aligned and deburr all edges for a smooth curtain transition.
- Before installing the track, insert alignment flat bar and joint pins to connect the different sections of track. Open track slightly if pinched.
- Working outwards from the pocket or stacking area, continue using the longest track sections next. Chalk line header for straight sections.
- Use the #10 screws provided to be centered 6" (152mm) apart in stacking areas and in curves, 12" (305mm) apart elsewhere.
Close off end of track with 2 screws so trolley wheels will not fall out.
- Leave one section of track open to insert the closure.



3. Curtain:

- Refer to shop drawing for correct order to insert sections into track. Sections are identified A, B, C, ...
Lift curtain section and insert all the trolley wheels one by one into the track making sure to keep all trolleys straight.
- To attach the closure sections together, remove #8 screws from post to snap the Quick-Connect at the end of the adjacent section into the post.
Attach the Quick-Connect to post with #8 screws on the interior side of the closure.
- Install the last section of track.

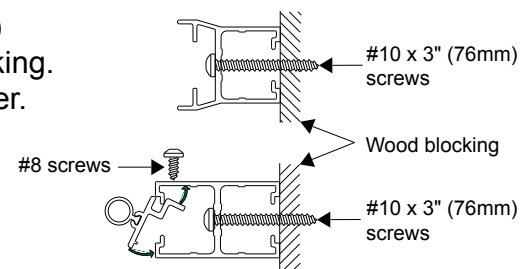


4. Post installation:

Begin installation with the lead and trailing post first, followed by the intermediate posts. **All posts must be plumb and aligned with track.** Please refer to the corresponding post detail for installation.

Post #9 - Wall striker post (jamb): (Attached to lead post inside box.)
Align cutout with locking hookbolt and fasten post into solid wood blocking.
If striker is too long, cut from the bottom. Do not cut the top of the striker.

Post #8 - Fixed end post: (Attached to wall)
Remove post from the closure. Screw post into solid wood blocking.
Reinsert the Quick-Connect into post and attach with #8 screws.





FOLDING CLOSURES Installation instructions

4. Post installation:

Post #2 - Top & bottom post:

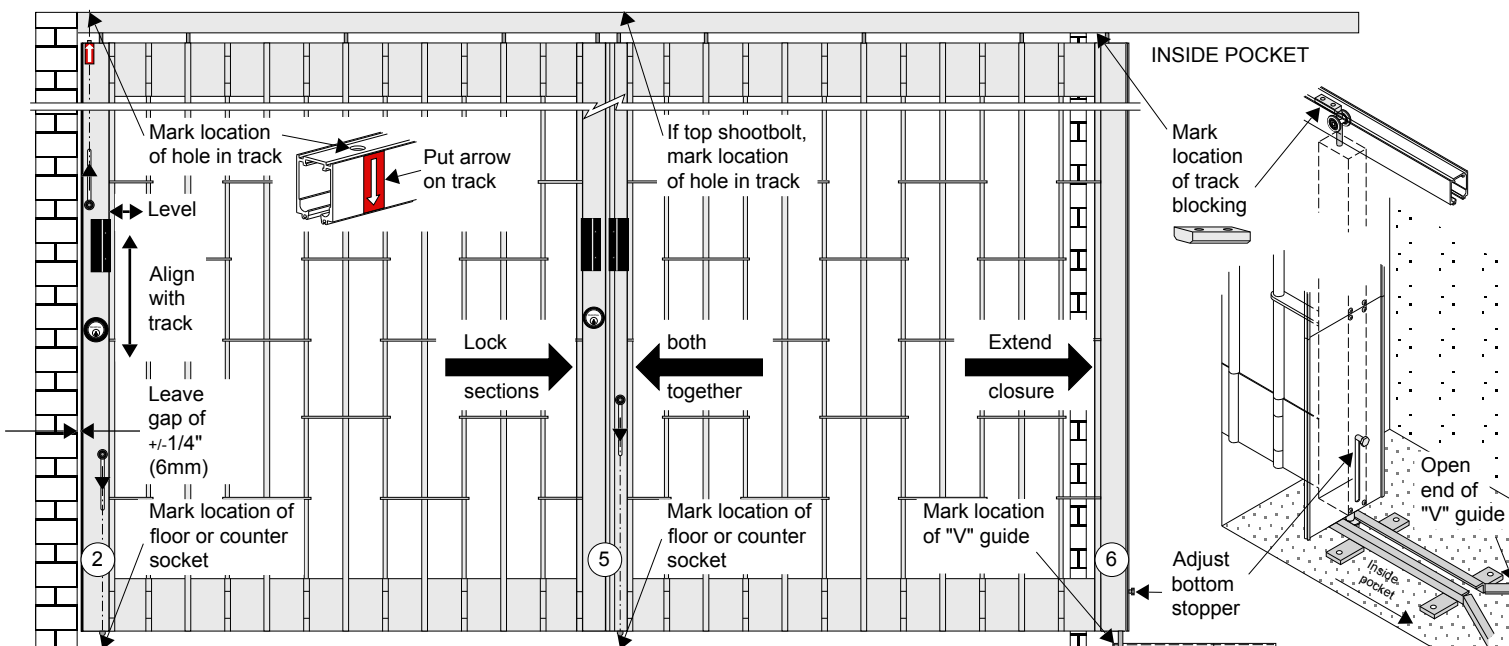
Level post in two directions against wall or pocket door. For a better operation, leave a gap of 1/4" (6mm) to 1/2" (12mm). Lower the bottom shootbolt and mark the location on the floor. Install the floor socket. Refer to point 5. Lock the bottom shootbolt. Use the top shootbolt and hit the track to leave a mark. Drill a 7/16" (11mm) dia. hole by 4" (102mm) deep. Wear safety glasses. Put the red arrows on track to indicate position of hole.

Post #5 - Bi-parting post:

When the closure is made of two equal sections closing in the center, lock the two parts together (bi-part) and install the floor socket. Refer to point 5. If the post has a top shootbolt, do not forget to drill a 7/16" (11mm) dia. hole by 4" (102mm) deep in the track. Wear safety glasses. Use the top bolt to mark the hole location. Put the red arrows on track to indicate position of hole.

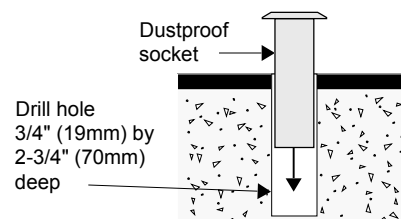
Post #6 - Floating end post:

Lock closure and extend to position the floating end post in the desired location. Do not over stretch to facilitate locking. Mark the track in front of the hanging rod for the track blocking and mark the floor in front of the bottom stopper for the "V" guide. Separate the last section and stack it in the pocket to install the track blocking in the track and the "V" guide to the floor. Adjust the bottom stopper to catch "V" guide and clear floor.



5. Floor sockets:

- To determine the floor socket's location, fully extend and lock the closure making sure that the sections are evenly distributed in the opening, leaving slack in each section for easy operation.
- Locate and mark on the floor the shootbolt positions.
- Slide the closure back to the stacked position. Using a masonry bit of 3/4" (19mm) dia., drill hole 2-3/4" (70mm) deep. Be careful not to break tiles or damage floor. Consult Mobilflex before drilling through granite or delicate tile. Precut carpets before drilling. Insert dustproof socket.



6. Clean and lubricate:

Clean any aluminum debris from track and apply a good quality synthetic grease (ex.: WD-40) to the entire length of track and to all joints.

7. Final inspection of installation:

Open and close the closure several times to be sure that it operates smoothly. Locks and shootbolts should operate with ease.