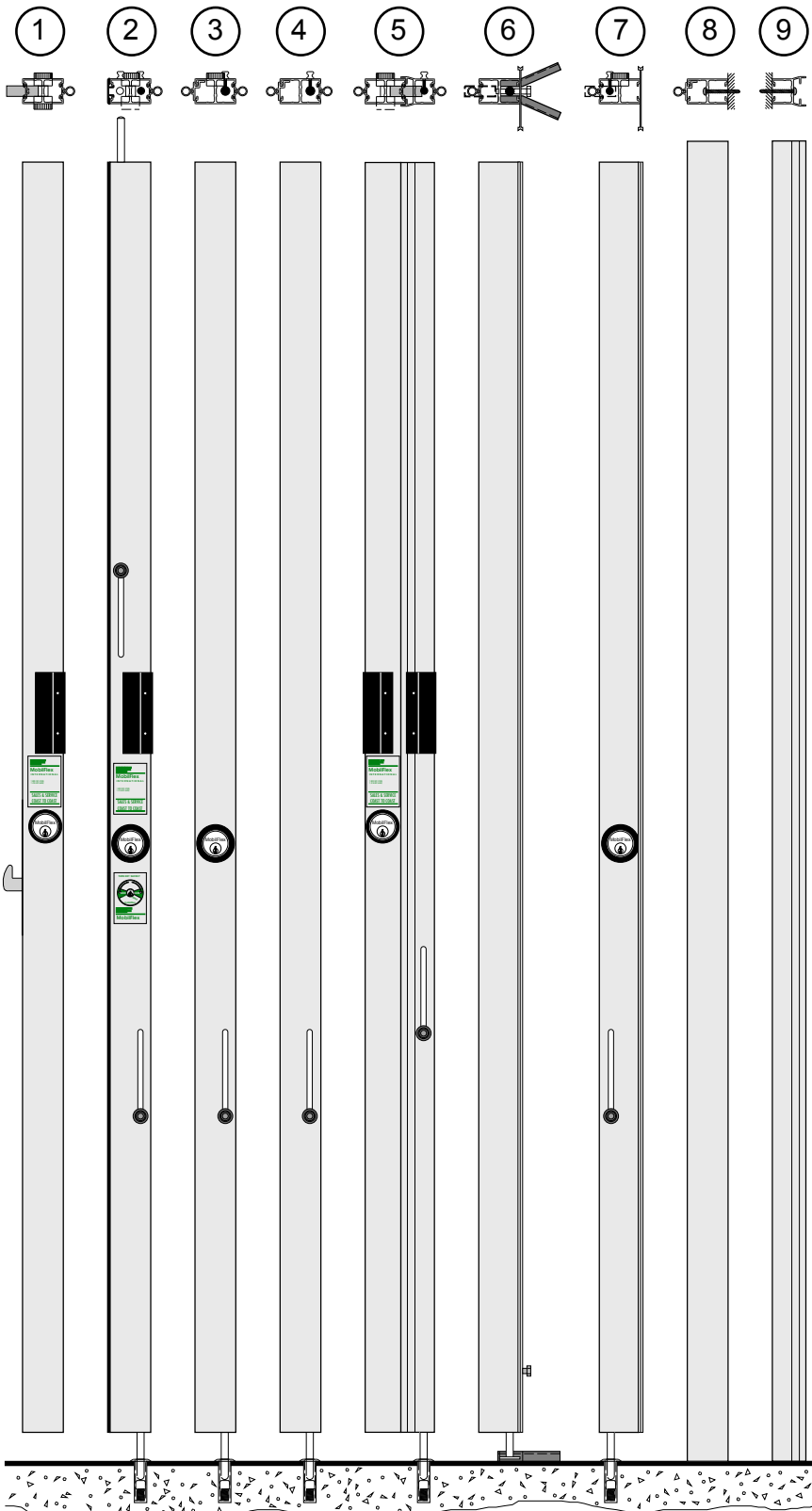


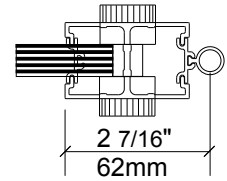
Post Identification

All posts are integral - fully joined to the rest of the grille or closure except No ⑨



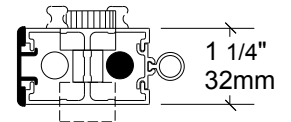
①

Lead post with hook lock and cylinder lock(s)



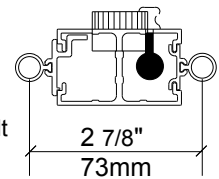
②

Lead post with top and bottom shootbolts and cylinder lock(s)



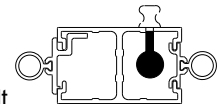
③

Intermediate post with bottom shootbolt and cylinder lock



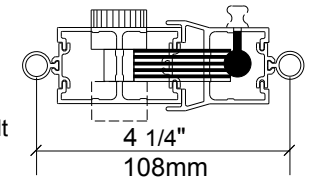
④

Intermediate post with bottom shootbolt and knob



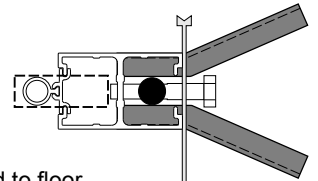
⑤

Bi-part assembly with bottom shootbolt and cylinder lock(s)



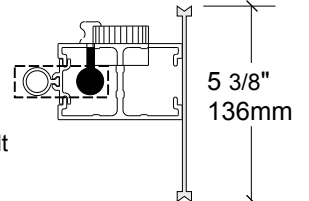
⑥

Floating end post with top stop and bottom "V" stop fitted to floor



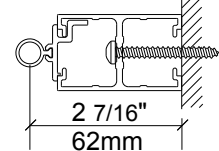
⑦

Floating end post with bottom shootbolt and cylinder lock



⑧

Fixed end post



⑨

Wall striker post (jamb)

