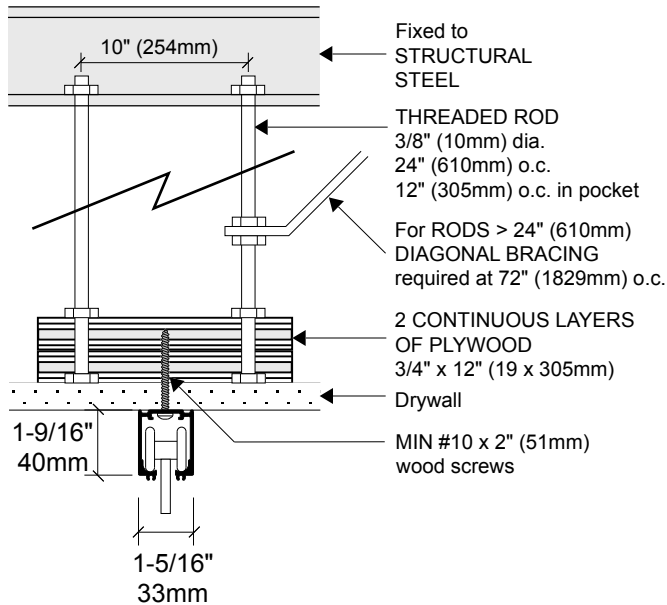


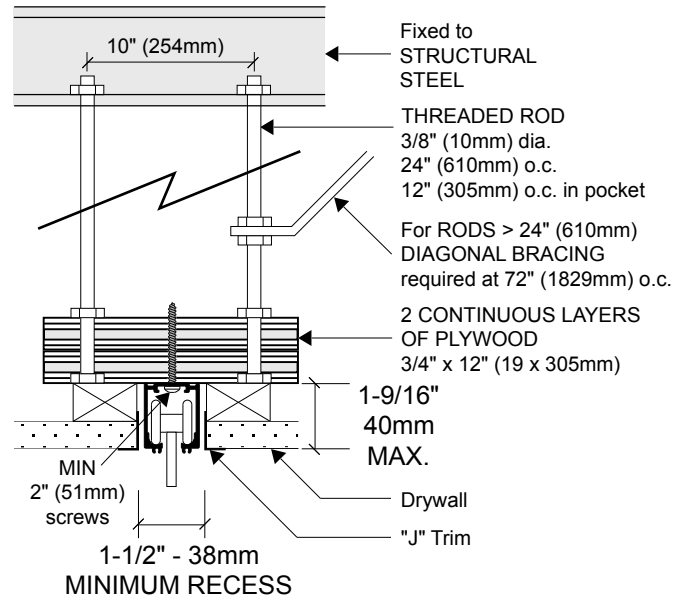
## Support structure possibilities

page 1 of 3

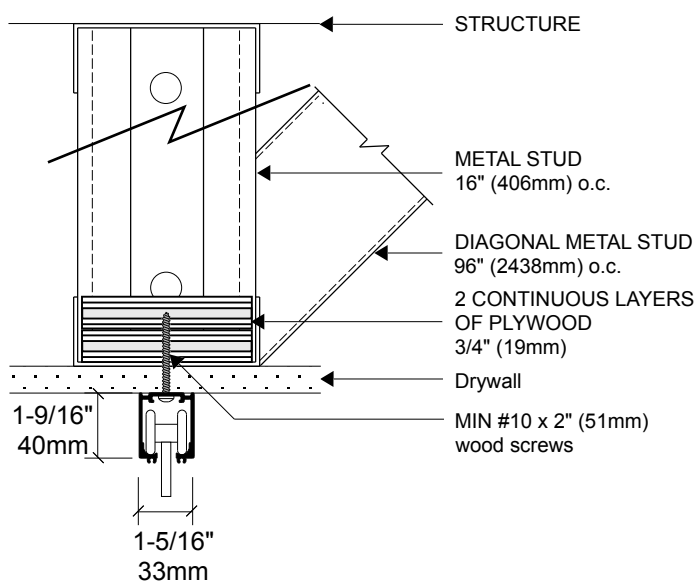
### THREADED ROD AND WOOD SUPPORT, SURFACE MOUNTED TRACK



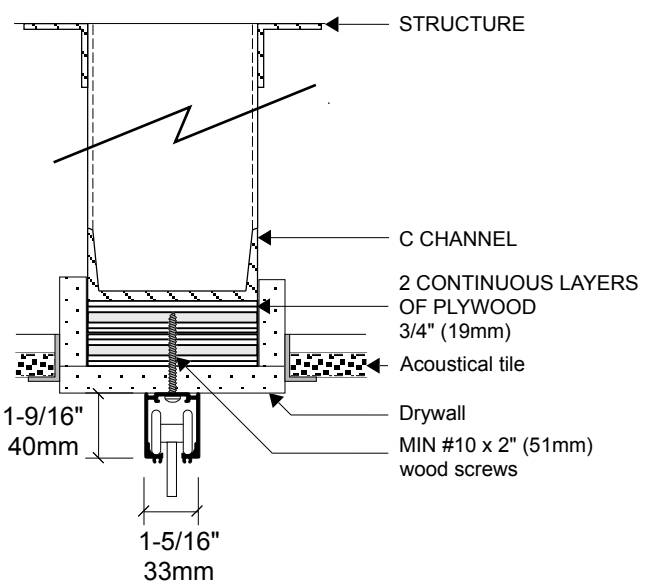
### THREADED ROD AND WOOD SUPPORT, RECESSED TRACK



### STEEL STUD AND WOOD SUPPORT



### "C" CHANNEL AND WOOD SUPPORT

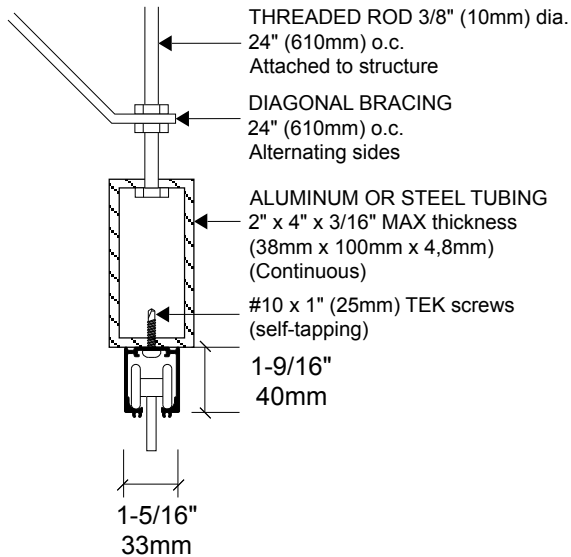


SUPPORT BUILT BY GENERAL CONTRACTOR  
MINIMUM WEIGHT CAPACITY OF 3 lb / sq. ft (15 kg / sq.m) OF GRILLE

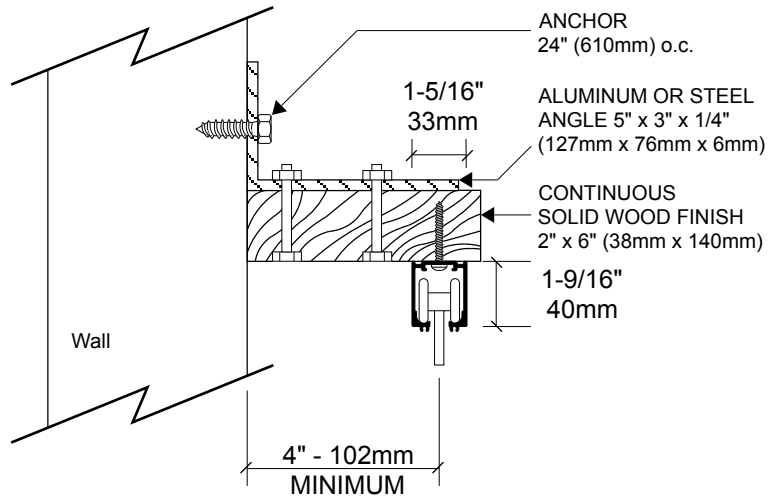
## Support structure possibilities

page 2 of 3

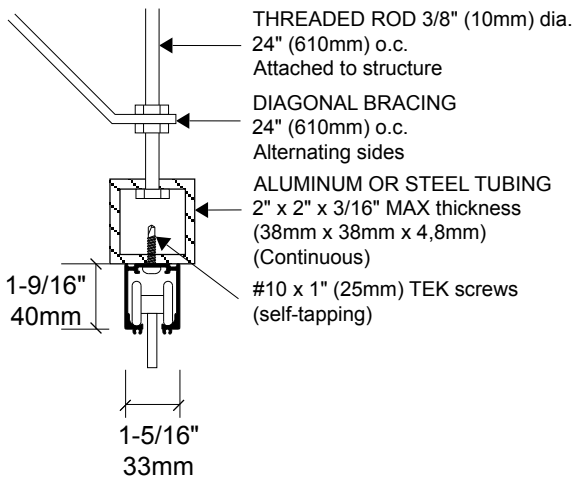
### RECTANGULAR TUBING SUPPORT ALUMINUM OR STEEL



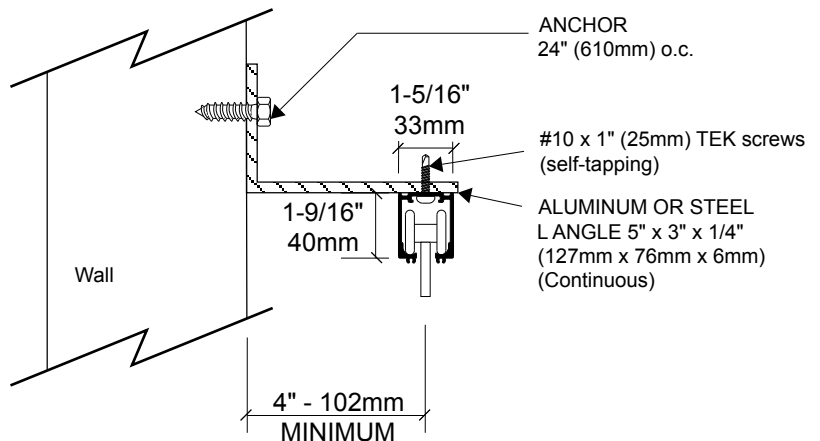
### 5" X 3" (127x76mm) ANGLE SUPPORT AND WOOD, FACE TO WALL MOUNT



### SQUARE TUBE SUPPORT ALUMINUM OR STEEL



### ANGLE SUPPORT, FACE TO WALL MOUNT

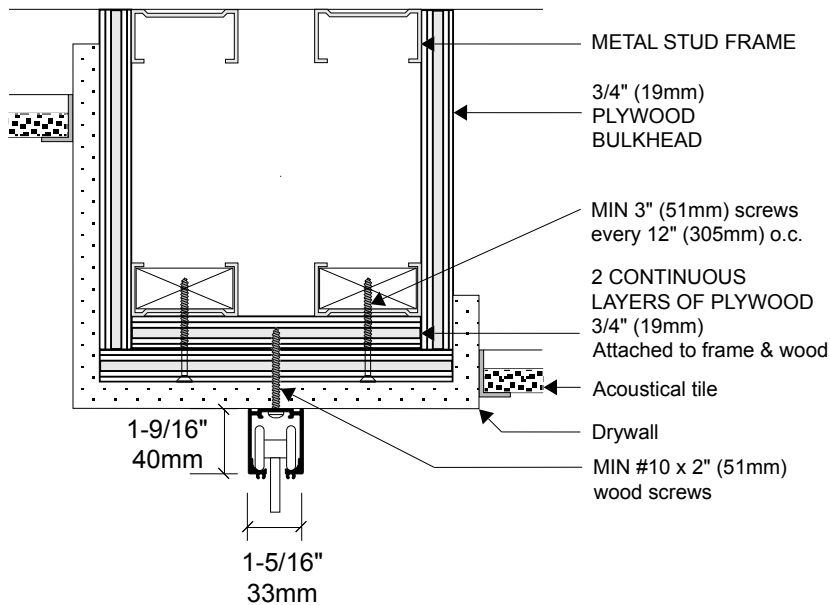


SUPPORT BUILT BY GENERAL CONTRACTOR  
MINIMUM WEIGHT CAPACITY OF 3 lb / sq. ft (15 kg / sq.m) OF GRILLE

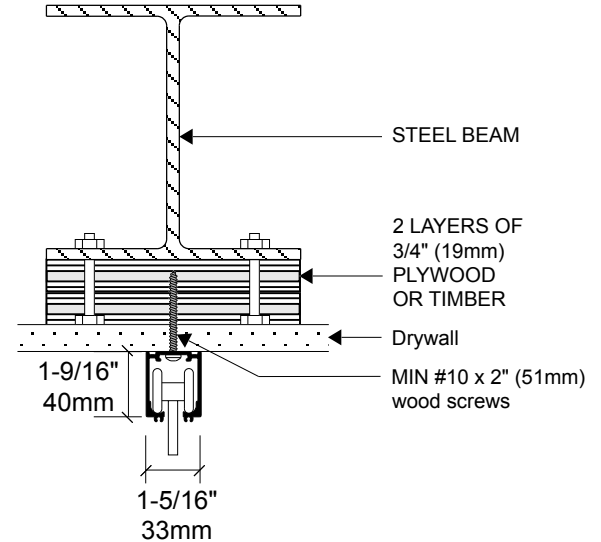
## Support structure possibilities

page 3 of 3

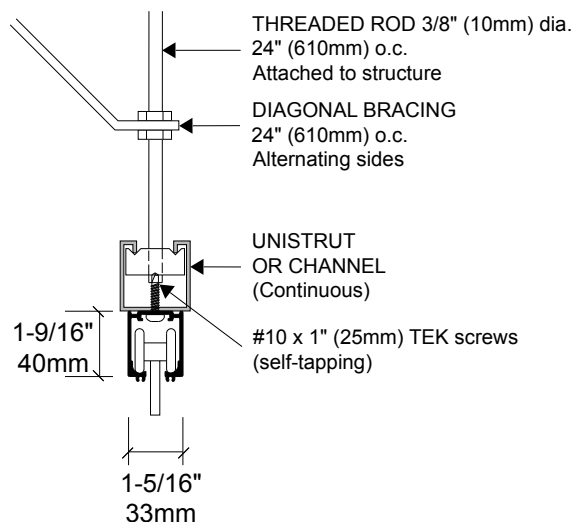
### METAL STUD AND PLYWOOD BULKHEAD SUPPORT



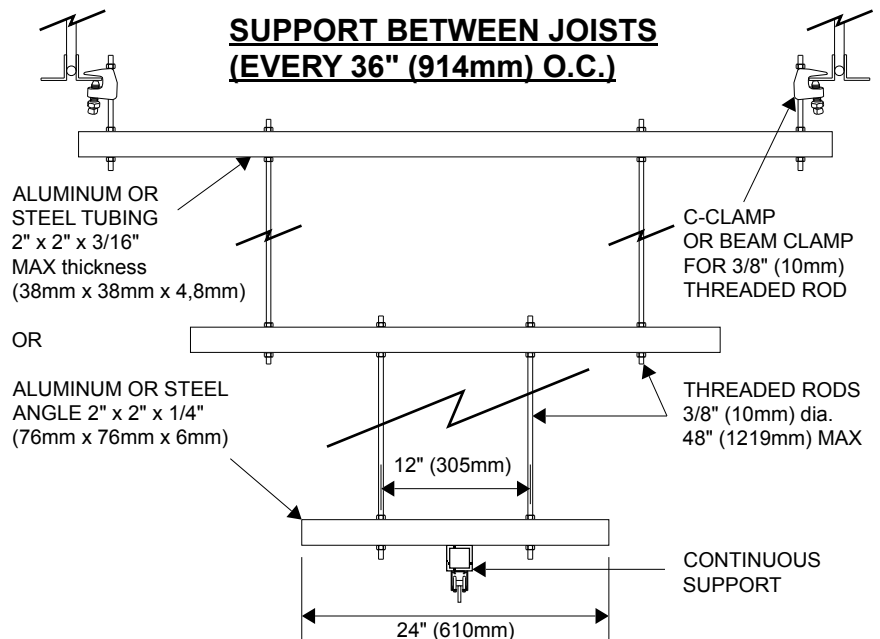
### STEEL BEAM AND WOOD SUPPORT



### UNISTRUT SUPPORT



### SUPPORT BETWEEN JOISTS (EVERY 36" (914mm) O.C.)



SUPPORT BUILT BY GENERAL CONTRACTOR  
MINIMUM WEIGHT CAPACITY OF 3 lb / sq. ft (15 kg / sq.m) OF GRILLE